

# Starting your patients on DUPIXENT® (dupilumab) with *DUPIXENT* *myway*®

A patient support program to help  
facilitate patients access to DUPIXENT



**DUPIXENT®**   
(dupilumab) Injection  
200mg • 300mg

00

Table of contents

01

*DUPIXENT MyWay* core support  
and the *DUPIXENT* team

02

Accessing *DUPIXENT* through  
specialty pharmacies

03

In-network specialty pharmacies

04

Enrolling in *DUPIXENT MyWay*

05

Coverage support

06

Patient access and nursing support

*DUPIXENT MyWay*<sup>®</sup> and the *DUPIXENT*<sup>®</sup> (dupilumab) team complement the support you give your patients and their caregivers throughout the treatment journey.

## Table of contents

- 01** *DUPIXENT MyWay* core support and the *DUPIXENT* team
- 02** Accessing *DUPIXENT* through specialty pharmacies
- 03** In-network specialty pharmacies
- 04** Enrolling in *DUPIXENT MyWay*
- 05** Coverage support
- 06** Patient access and nursing support

**DUPIXENT**  
*myway*<sup>®</sup>

**DUPIXENT**<sup>®</sup>  
(dupilumab) Injection  
200mg • 300mg

**Need more  
information?**

Call **1-844-DUPIXEN(T)** (1-844-387-4936) Option 1,  
Monday–Friday, 8 AM–9 PM Eastern time, or visit  
**DUPIXENThcp.com**.



# DUPIXENT MyWay<sup>®</sup> provides your eligible patients with support that supplements what your office offers

## DUPIXENT MyWay support

Coverage support

Patient access support<sup>a</sup>

Nursing support

## DUPIXENT<sup>®</sup> (dupilumab) team

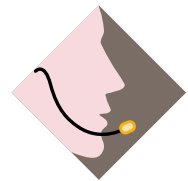
**Sales Professional**  
Provides information about DUPIXENT



**Field Access Specialist**  
Provides access and reimbursement expertise



**DUPIXENT MyWay Coordinator**  
Provides a single point of contact with local reimbursement knowledge for the office



**DUPIXENT MyWay Nurse Educator**  
Provides a single point of contact for patients to help empower them to use and stay on therapy. Available 24/7



<sup>a</sup>THIS IS NOT INSURANCE. Not valid for prescriptions paid, in whole or in part, by Medicaid, Medicare, Veterans Affairs, Department of Defense, TRICARE, or similar federal or state programs. Eligible patients subject to program restrictions. Program has a calendar-year maximum of \$13,000.







## DUPIXENT® (dupilumab) is covered under the pharmacy benefit

If your patients have tried specialty medications prior to DUPIXENT, they may have been covered under the medical benefit

Your patients and/or caregivers may have additional responsibilities with this access pathway

Coverage under the pharmacy benefit is likely to modify the way DUPIXENT is ordered, shipped, stored, administered, and paid for.

### Under the pharmacy benefit...

	<b>Ordering</b>	The patient or caregiver orders DUPIXENT from the <b>specialty pharmacy</b>
	<b>Shipping and storage</b>	<b>Patient or caregiver coordinates shipment</b> to their home or HCP's office, depending on individual treatment plan, training needs, and HCP and patient preferences
	<b>Administration</b>	At home or in-office <b>administration</b>
	<b>Payment</b>	Patient pays copay at the <b>specialty pharmacy</b>

HCP=healthcare provider.

## DUPIXENT is most commonly accessed through a specialty pharmacy

The path to accessing DUPIXENT may be different than the one your patients or caregivers have taken to access other medications



Prescription      Benefits verification      Prior authorization      **Approval and pharmacy triage**      Fulfillment and shipment      Refills

### Because patients and caregivers may be new to the specialty pharmacy process, it is important they understand their role in obtaining DUPIXENT

- It is important that patients or caregivers **answer all phone calls from their specialty pharmacy**. DUPIXENT cannot be shipped until your patient speaks with the specialty pharmacy to schedule delivery
- Delivery to your patients' preferred location may need to be **coordinated on a monthly basis**





# You can access DUPIXENT® (dupilumab) from numerous in-network specialty pharmacies

Select your preferred specialty pharmacy to access DUPIXENT or use one of our in-network specialty pharmacies from the list below<sup>a</sup>

Specialty pharmacy	Phone	Website	Fax
AcariaHealth	(800) 511-5144	acariahealth.envolvehealth.com	(877) 541-1503
Accredo	(866) 759-1557	accredo.com	(888) 302-1028
Aetna Specialty Pharmacy	(866) 782-2779	aetnaspecialtypharmacy.com	(866) 329-2779
AllianceRx Walgreens Prime	(855) 244-2555	alliancerxwp.com	(888) 570-4700
Amber Pharmacy	(888) 370-1724	amberpharmacy.com	(402) 896-3774
Avella Specialty Pharmacy	(877) 546-5779	avella.com	(877) 546-5780
BioPlus Specialty Pharmacy	(888) 292-0744 Option 1	bioplusrx.com	(800) 269-5493
BriovaRx Specialty Pharmacy	(855) 427-4682	briovarx.com	(877) 342-4596
Cigna Specialty Pharmacy	(800) 351-3606	cigna.com	(800) 351-3616
CVS Specialty	(800) 237-2767	cvsspecialty.com	(800) 323-2445
Diplomat	(877) 977-9118	diplomatpharmacy.com	(877) 301-8207
EnvisionSpecialty	(877) 437-9012	envisionspecialty.com	(877) 309-0687
Humana Specialty Pharmacy	(800) 486-2668	humanapharmacy.com	(877) 405-7940
Kroger Specialty Pharmacy	(888) 355-4191	krogerspecialtypharmacy.com	(888) 355-4192
Senderra Specialty Pharmacy	(855) 460-7928	senderrarx.com	(888) 777-5645
US Bioservices	(888) 518-7246	usbioservices.com	(888) 418-7246



<sup>a</sup>Sanofi Genzyme and Regeneron Pharmaceuticals, Inc., do not recommend any particular specialty pharmacy. However, the patient's health plan may recommend or mandate a particular specialty pharmacy.

## DUPIXENT MyWay® support begins with a complete Enrollment Form

DUPIXENT MyWay Enrollment Forms are available at [DUPIXENThcp.com](http://DUPIXENThcp.com) or from your sales representative or Field Access Specialist



After completing the Enrollment Form with your patients and/or caregivers, fax to DUPIXENT MyWay at 1-844-387-9370. Patients can also self-enroll at any point in their treatment journey by calling 1-844-DUPIXEN(T) (1-844-387-4936)



**DUPIXENT**  
(dupilumab) Injection  
200mg • 300mg

## Help ensure your patients' enrollment in DUPIXENT MyWay is processed without delays

### Make sure all required signatures are included

Missing patient and prescriber signatures is a common reason for delays



### Capture appropriate ICD-10-CM codes

A list of potential diagnosis codes is included on the last page of the Enrollment Form for your reference



### Encourage patients and/or caregivers to communicate with DUPIXENT MyWay through multiple channels

Providing their email, mobile phone number, and consent to receive texts enables flexible communication



ICD-10-CM=International Classification of Diseases, Tenth Revision, Clinical Modification.

## DUPIXENT MyWay<sup>®</sup> provides assistance navigating the insurance process

### DUPIXENT MyWay...



#### Conducts benefits verifications

- Investigates health plans' coverage and approval criteria
- Provides a summary of benefits to your office and your patients
- Identifies patients' out-of-pocket responsibilities



#### Provides PA support<sup>a</sup>

- Educates your office and staff (to the extent they are not already familiar with the process) to ensure appropriate information and forms are submitted
- Follows up with PA reminders



#### Educates about the appeals process

- Provides appeals nurses to help educate staff (to the extent they are not already familiar with the process) about how to appeal any coverage denial
- Offers an appeals kit along with sample letters, available at [DUPIXENThcp.com](http://DUPIXENThcp.com)

### DUPIXENT MyWay can also provide:

- » New benefits verifications for patients who have changes in their insurance or coverage for DUPIXENT<sup>®</sup> (dupilumab)
- » Support for eligible patients who lose or have a lapse in their insurance coverage

PA=prior authorization.

DUPIXENT  
myway

**DUPIXENT<sup>®</sup>**  
(dupilumab) Injection  
200mg • 300mg

## DUPIXENT MyWay can complement your office's approach for accessing DUPIXENT

DUPIXENT MyWay can offer patients support no matter which way you choose to secure coverage

- 1** Fill out your preferred specialty pharmacy's name, phone number, and fax number on the *DUPIXENT MyWay* Enrollment Form
- 2** Use the *DUPIXENT MyWay* Enrollment Form to choose your path to benefits verification and securing coverage for DUPIXENT

#### DUPIXENT MyWay

- Leave the box below unchecked to indicate you would like *DUPIXENT MyWay* to conduct a benefits investigation on your patient's behalf

OR

#### Preferred specialty pharmacy

- Check the box below to indicate you are working with a specialty pharmacy to secure coverage

Remember to send the Enrollment Form to both *DUPIXENT MyWay* and the specialty pharmacy

- »  I have already sent this prescription to the specialty pharmacy. By checking the box, I acknowledge *DUPIXENT MyWay*<sup>®</sup> will not conduct a benefits verification. The specialty pharmacy is responsible for securing coverage on my patient's behalf.

## DUPIXENT MyWay<sup>®</sup> helps optimize your patients' access to DUpIxENT<sup>®</sup> (dupilumab) with copay assistance for eligible patients

Eligible patients covered by commercial health insurance may have as little as a **\$0 copay** for DUpIxENT (for a maximum of \$13,000 per patient per calendar year)<sup>a</sup>

Patients and caregivers can access the Copay Card Program through:



DUPIXENT MyWay



Copay Card brochure



DUPIXENT.com



Their specialty pharmacy

**\$** DUpIxENT MyWay may be able to provide educational information about additional financial assistance

If your patients experience a change in coverage or affordability for DUpIxENT at any time throughout the treatment journey, DUpIxENT MyWay is available to investigate insurance coverage for DUpIxENT and explore potential financial assistance options

DUPIXENT myway

**DUPIXENT<sup>®</sup>**  
(dupilumab) Injection  
200mg • 300mg

<sup>a</sup>THIS IS NOT INSURANCE. Not valid for prescriptions paid, in whole or in part, by Medicaid, Medicare, Veterans Affairs, Department of Defense, TRICARE, or similar federal or state programs. Eligible patients subject to program restrictions. Program has a calendar-year maximum of \$13,000.

## DUPIXENT MyWay offers education and nursing support to help empower your patients to start and appropriately stay on therapy

Along with your primary guidance...

» A **DUPIXENT MyWay Nurse Educator** connects your patients and caregivers to a variety of helpful resources



Insightful tips and tools to help them along the way



Supplemental **injection training** over the phone



One-on-one **nursing support**, available 24/7 to answer questions about DUpIxENT



**Copay assistance** for eligible patients



Help **scheduling monthly deliveries** of DUpIxENT

In addition, local, trained **DUPIXENT MyWay Nurses** provide patients and caregivers with **supplemental in-person injection training at their home**

A supplemental video on how to administer DUpIxENT is available at **DUPIXENT.com**

# We are here to support your patients and caregivers throughout their treatment journey

With *DUPIXENT MyWay*<sup>®</sup>, your patients and caregivers will have access to a range of resources



Nurse Educators offering tips, tools, and resources



Supplemental injection training online or in-person



Ongoing nursing support for *DUPIXENT*<sup>®</sup> (dupilumab) available by phone **24/7**



Help scheduling deliveries and monthly prescription refills



Exclusive support and resources about *DUPIXENT*

*DUPIXENT MyWay* customizes its communication to fit each patient's and caregiver's lifestyle via **phone, email, or text messaging**

business card

**DUPIXENT**<sup>®</sup>  
(dupilumab) Injection  
200mg • 300mg

For any questions or concerns, or to report side effects with *DUPIXENT*, please contact **1-844-DUPIXEN(T)** (1-844-387-4936), Monday–Friday, 8 AM–9 PM Eastern time.

SANOFI GENZYME  **REGENERON**

© 2019 Sanofi and Regeneron Pharmaceuticals, Inc.  
All Rights Reserved. 06/2019 US-DUP-1001(1)